

Peanut planting is complete across the Virginia-Carolina region. Stands are good to excellent in most fields. Thrips control has been a challenge in some areas of the region depending on performance of in-furrow insecticides either through limitations in soil moisture at planting for absorption, possible resistance in thrips populations to imidacloprid, and abundance of thrips. Numerous growers have applied acephate to emerged peanuts to suppress thrips populations. Weed control has been adequate in most fields, although growers have had to make one or two postemergence sprays at this point in the season. Generally, growers will need to make four or five sprays by the end of the season to control weeds completely in a significant number of fields.

Peanuts in many fields initiated flowers during the past two weeks. This will continue through July into August with peak flowering generally occurring in mid-July depending on planting date. Gypsum is applied at this time of the year to ensure that adequate calcium is available in the pegging zone for proper kernel development, especially for Virginia market types. Although a significant number of fields have received these applications, grower will continue the process of applying gypsum over the next two weeks. In some years there can be bottlenecks with loading and transport from suppliers. Not only is gypsum expensive, transport costs this year are much higher than in 2021.

In the lower area of the Virginia-Carolina region, growers are beginning to apply their first fungicide spray to protect peanut from leaf spot disease. Most growers in mid and upper areas of the Virginia-Carolina region will begin applying fungicides during the last week of June or first week of July. After that point in time, most growers are on a two-week schedule of fungicide applications for both leaf spot and stem rot diseases. Some newer chemistries offer longer periods of protection but bi-weekly sprays are general used across the region.

Manganese deficiency has been observed in some fields with older peanuts. Foliar sprays are used to remedy this deficiency. Boron will be applied in July during peak flowering to ensure kernel development.

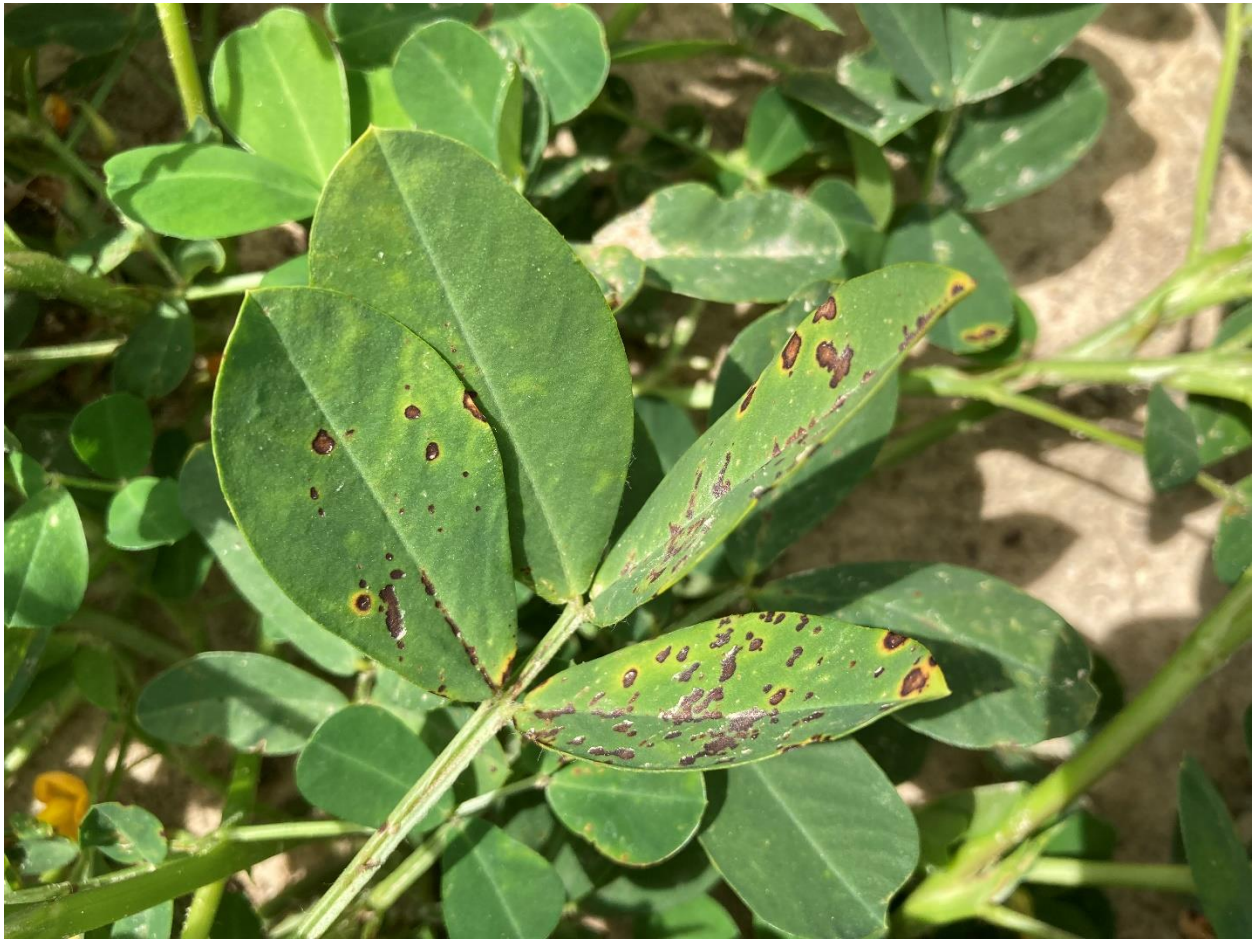
Rainfall accumulation across the region continues to be sporadic (see table). However, peanuts are generally off to a good start going into late June. Peanuts are one of the most resilient crops across the region and can withstand biotic and abiotic stresses early in the season with minimal impact on yield and quality. However, hot and dry conditions that are present in some areas of the Virginia-Carolina region, especially in the lower region, could ultimately have a negative impact on peanut as the crop moves into the flowering and pod development phase.

Estimates of plantings for North Carolina, South Carolina, and Virginia are 42,500 ha (105,000 acres), 10,526 ha (26,000 acres), and 31,174 ha (77,000 acres), respectively. Yield potential for the year is 4,480 kg per ha (4,000 pounds per acre) across the region.

**Rainfall accumulation from May 1 through June 20, 2022**

<b>City</b>	<b>State</b>	<b>Rainfall</b>	
		<b>mm</b>	<b>inches</b>
Wakefield	Virginia	116.8	4.60
Emporia	Virginia	78.7	3.10
Lewiston-Woodville	North Carolina	169.1	6.66
Gatesville	North Carolina	171.9	6.77
Rocky Mount	North Carolina	113.2	4.46
Kinston	North Carolina	132.8	5.23
New Bern	North Carolina	185.6	7.31
Fayetteville	North Carolina	144.7	5.70
Clinton	North Carolina	179.5	7.07
Wallace	North Carolina	186.6	7.35
Maxton	North Carolina	97.7	3.85
Whiteville	North Carolina	198.1	7.80
Darlington	South Carolina	130.3	5.13
Florence	South Carolina	89.9	3.54
Aiken	South Carolina	124.9	4.92
Orangeburg	South Carolina	152.6	6.01
Barnwell	South Carolina	87.3	3.44
<b>Average</b>		<b>138.8</b>	<b>5.47</b>

Peanut foliage expressing injury from a previous herbicide application.





Peanut growth neat Whiteville, North Carolina in the southeastern portion of the state.





Gypsum applied to peanut on June 20 near Whiteville, North Carolina.





Peanut field near Oak City, North Carolina that had been cultivated in recent days.



Peanut flowers in the canopy near Rocky Mount, North Carolina in the northeastern portion of the state on June 19.

