

Determining the Most Effective Time Interval for Fungicide Sprays Following Miravis plus Elatus or Convoy

D.L. JORDAN* and B.B. SHEW

North Carolina State University, Raleigh, NC 27695



**8th Southeastern
North Carolina
Peanut Field Day**

September 10, 2019

**Border Belt Tobacco Research
Station, Whiteville, N.C.**

Good topic for a field day

Barbara retired

**Looking forward to arrival of new
pathologist for 2023 season**



Miravis plus Elatus or Convoy Applied at Spray 2

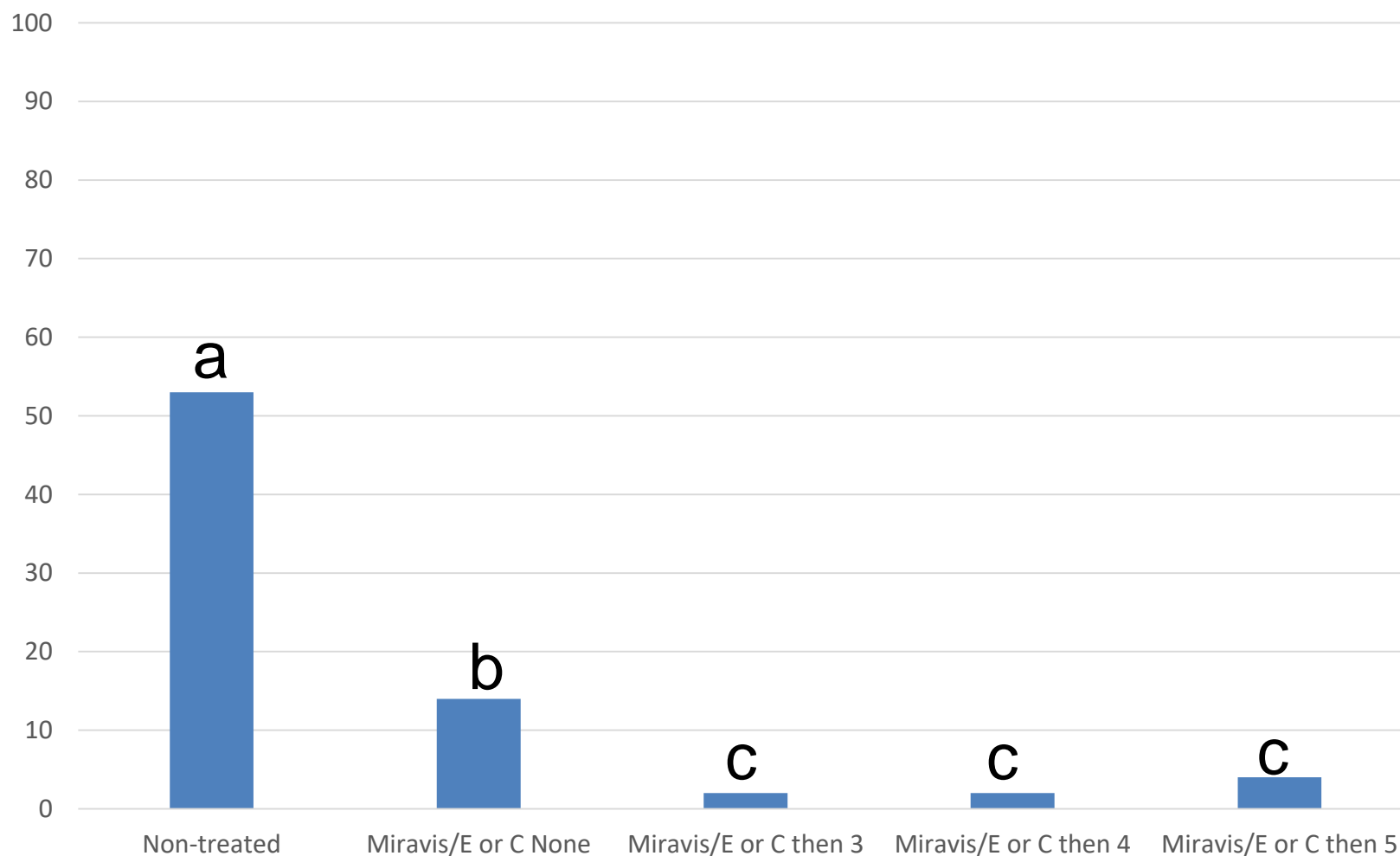
- Non-treated
- No follow up after spray 2
- Follow up 3 weeks after spray 2
- Follow up 4 weeks after spray 2
- Follow up 5 weeks after spray 2

*Spray 1 was chlorothalonil

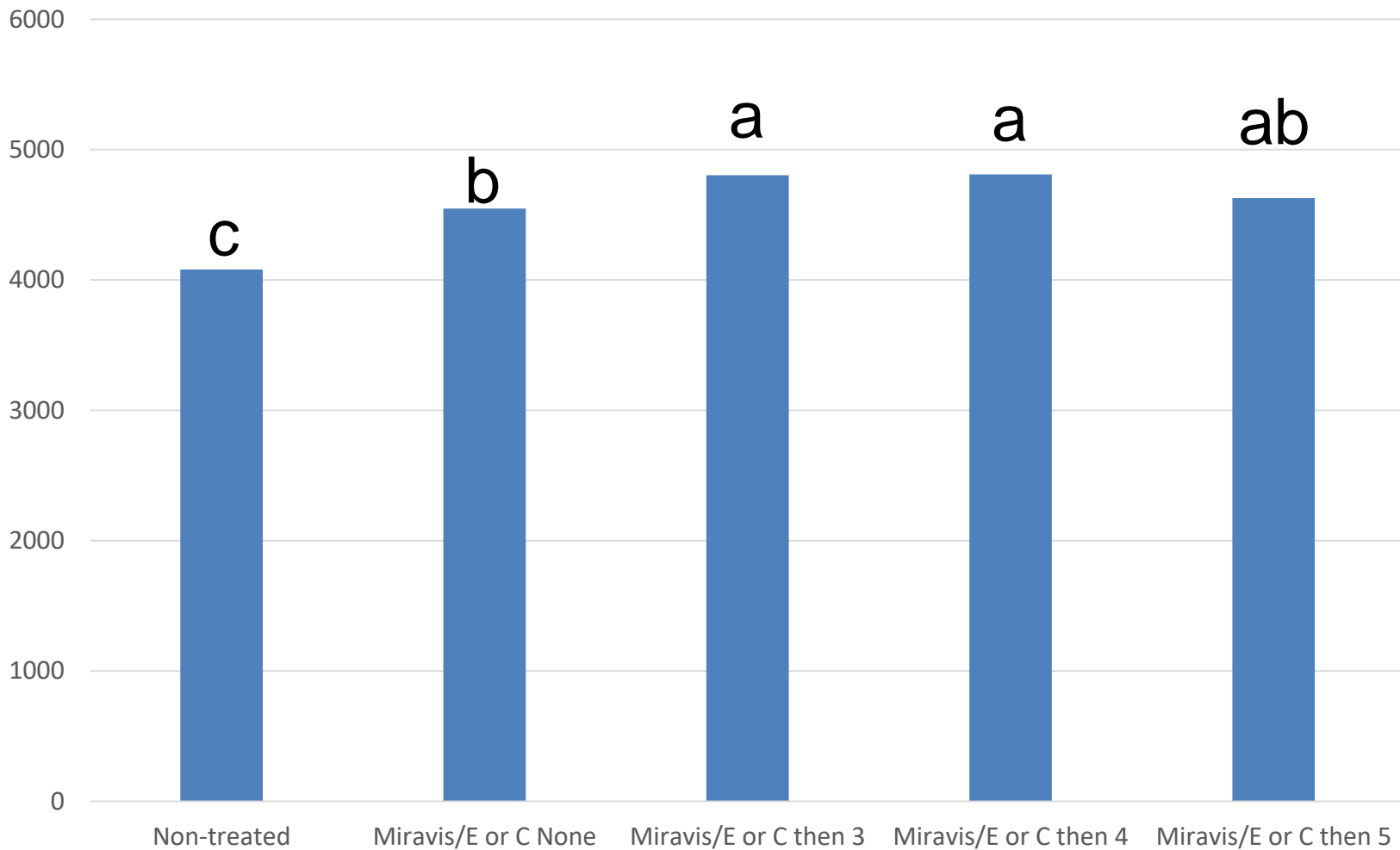
**Follow up was chlorothalonil plus azoxystrobin or tebuconazole (through August) then chlorothalonil (through mid September)

Study 1 Results

Canopy Defoliation at Digging with Bailey or Bailey II Follow up after Miravis plus Elatus or Convoy Study 1 - Pooled over 10 site-years (2019-2021)

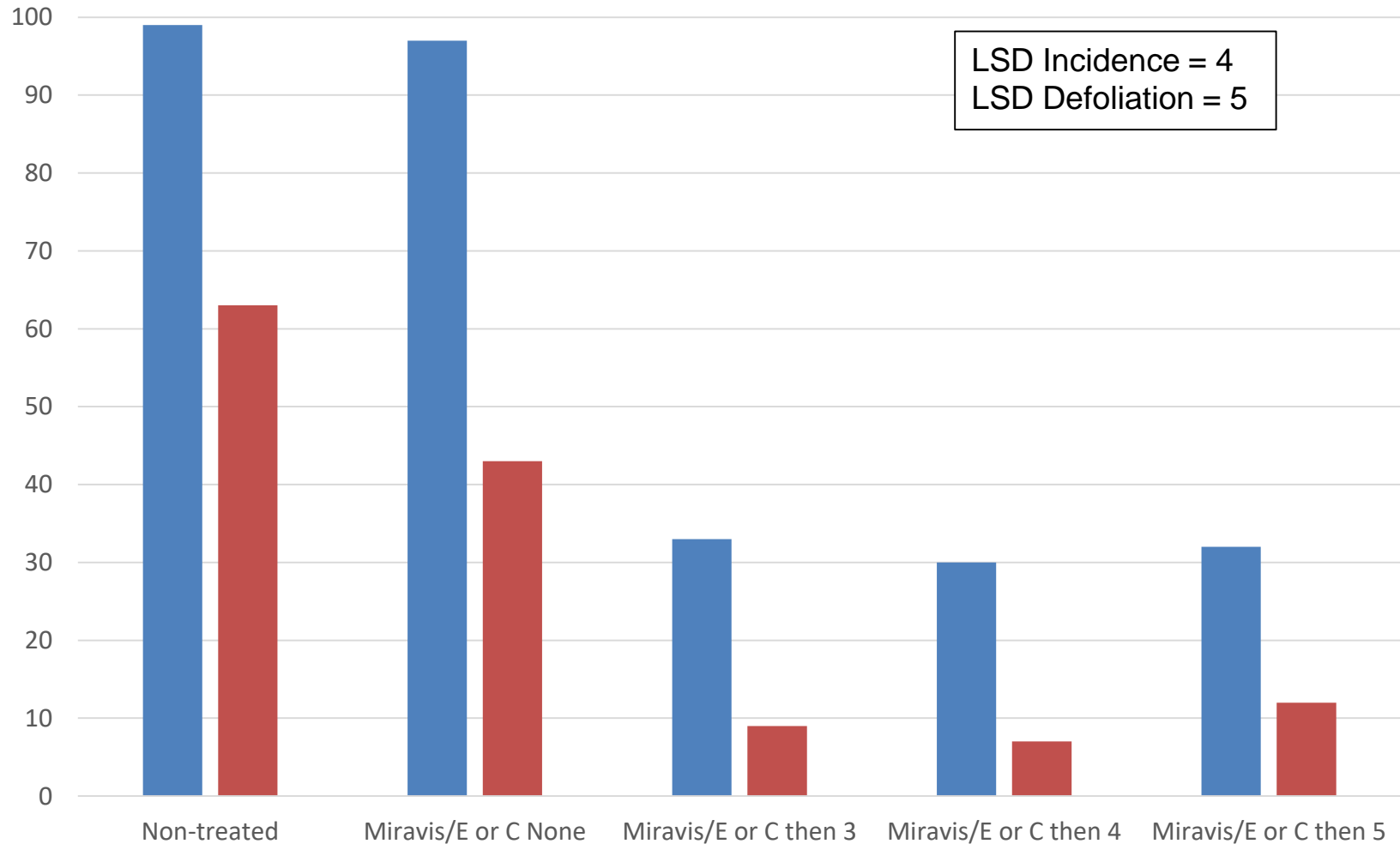


**Peanut Yield (lbs/acre) with Bailey or Bailey II
Follow up after Miravis plus Elatus or Convoy
Study 1 - Pooled over 10 site-years (2019-2021)**

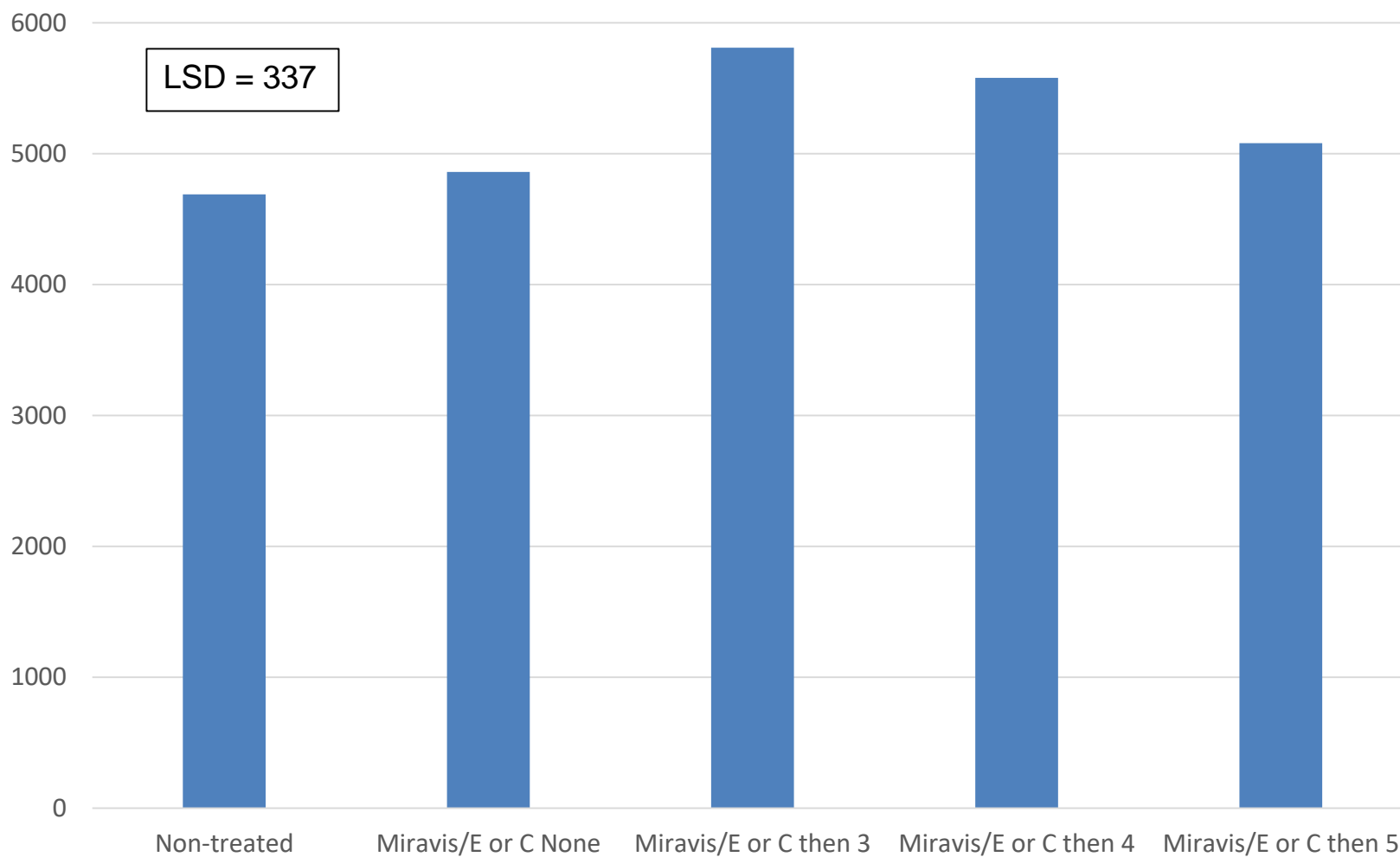


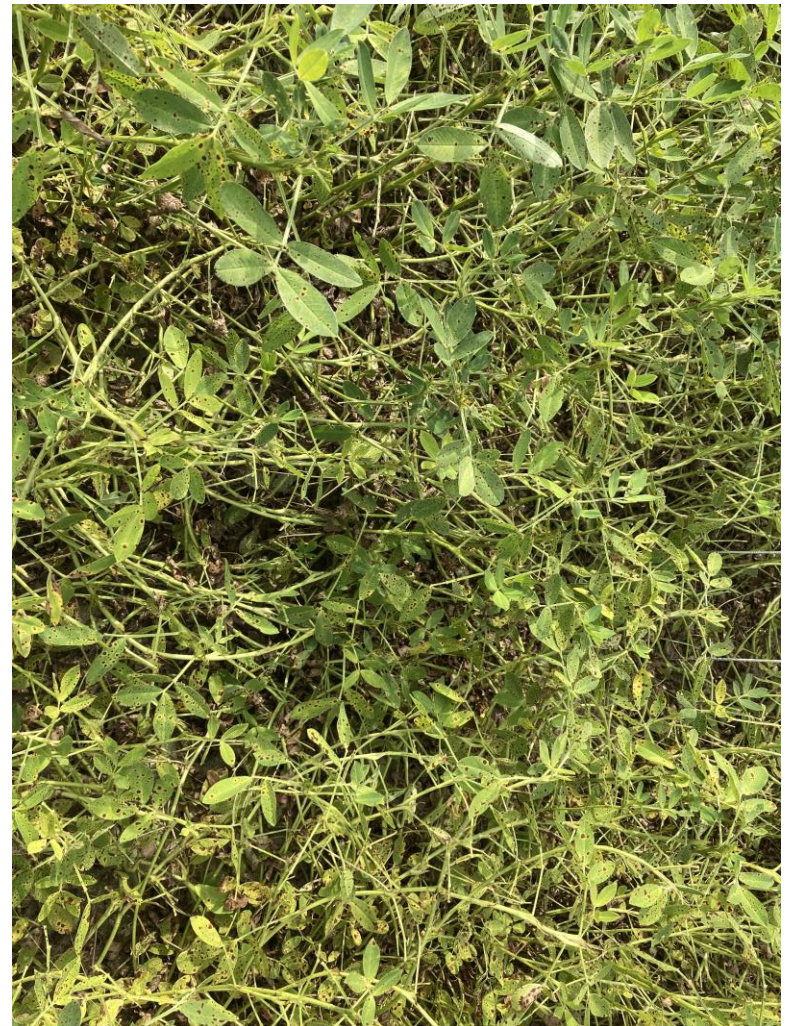
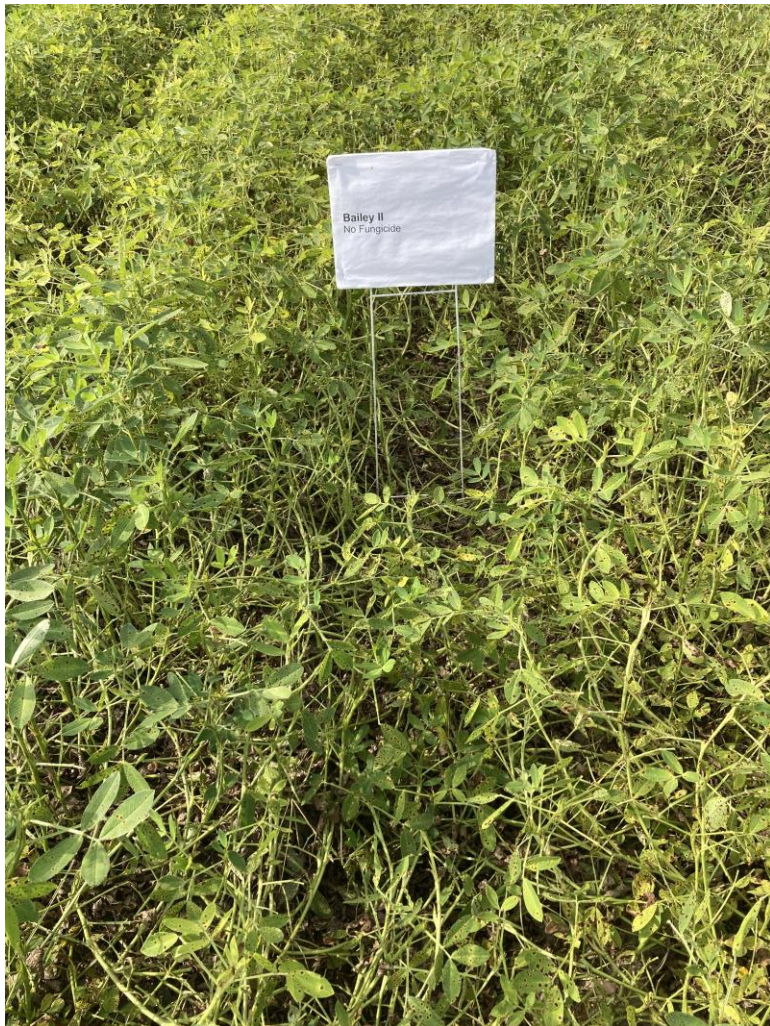
Study 2 Results

Leaf Spot Incidence (Blue Bar) and Canopy Defoliation (Red Bar)
Interval of Follow up after Miravis plus Elatus or Convoy
Study 2 - Pooled over three cultivars and three locations (2021)

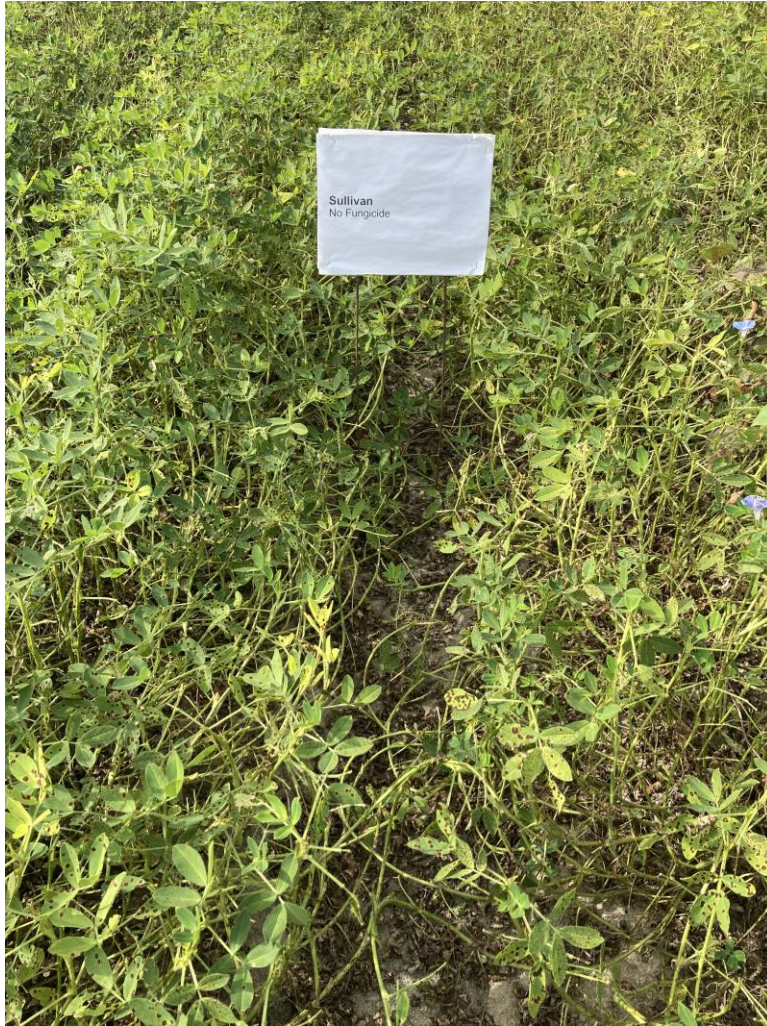


Peanut Yield (lbs/acre)
Follow up after Miravis plus Elatus or Convoy
Study 2 - Pooled over three cultivars and three locations (2021)



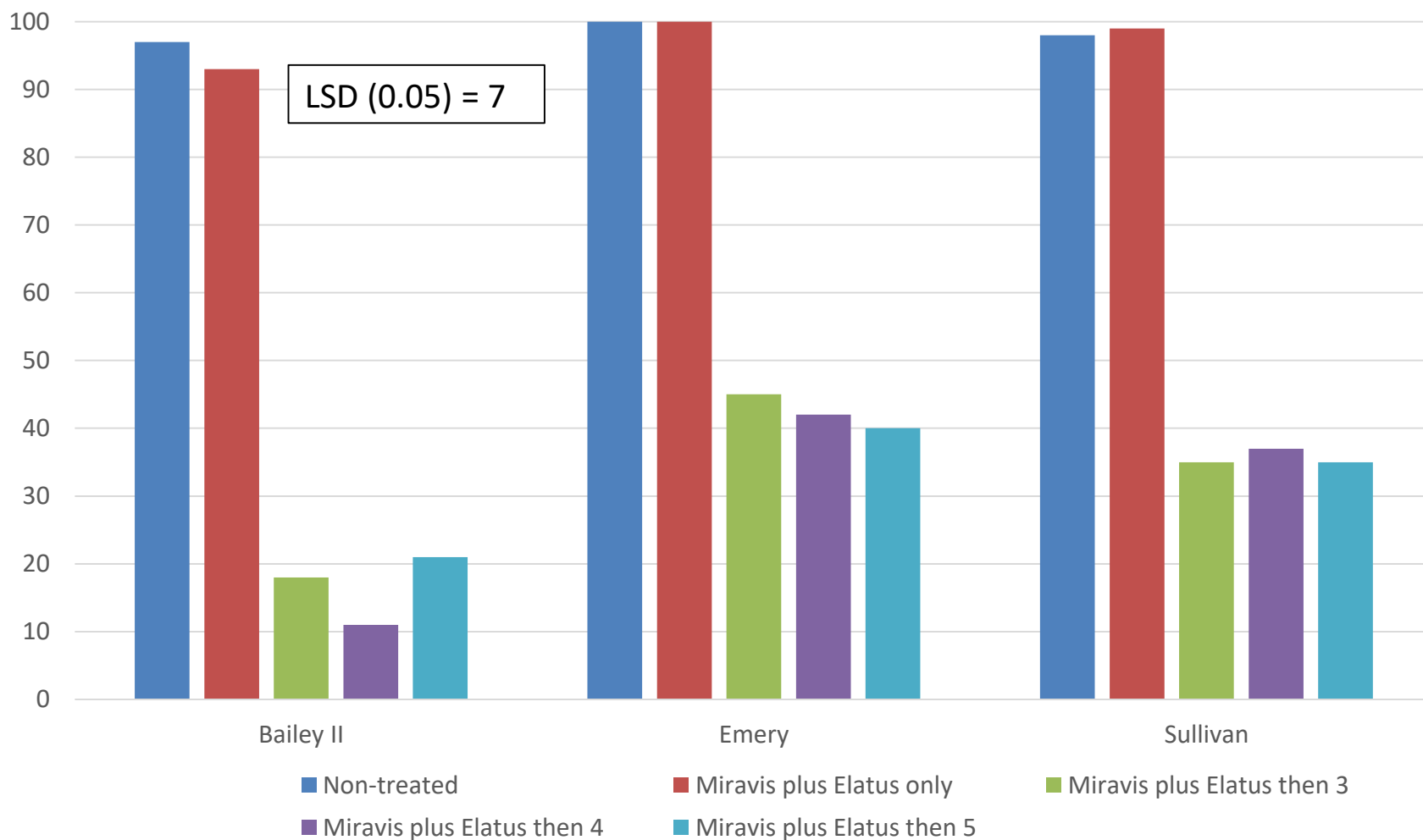






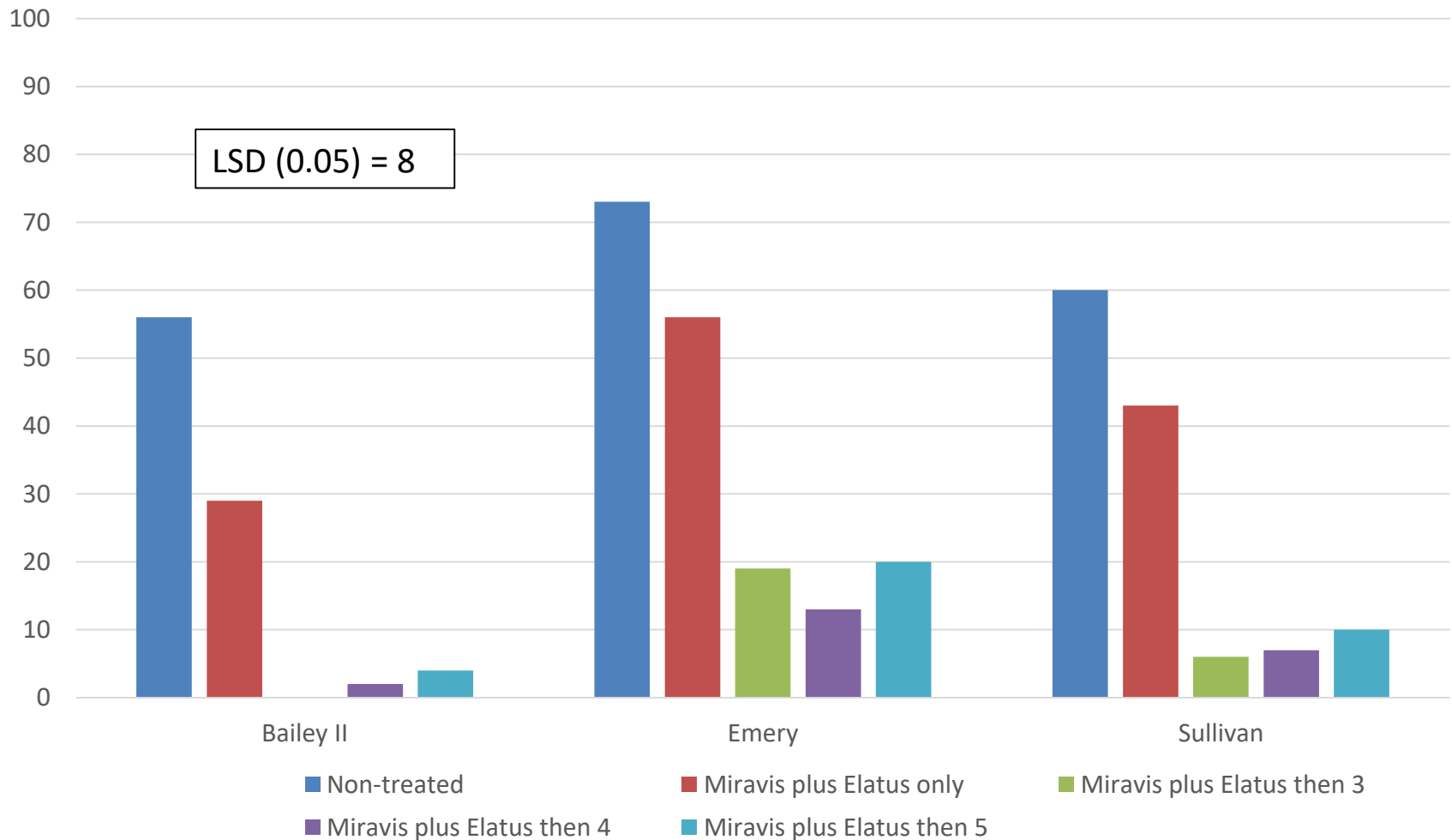
Leaf Spot Incidence (Percent of Leaves with Lesions) at Harvest

Data are pooled over three locations in 2021



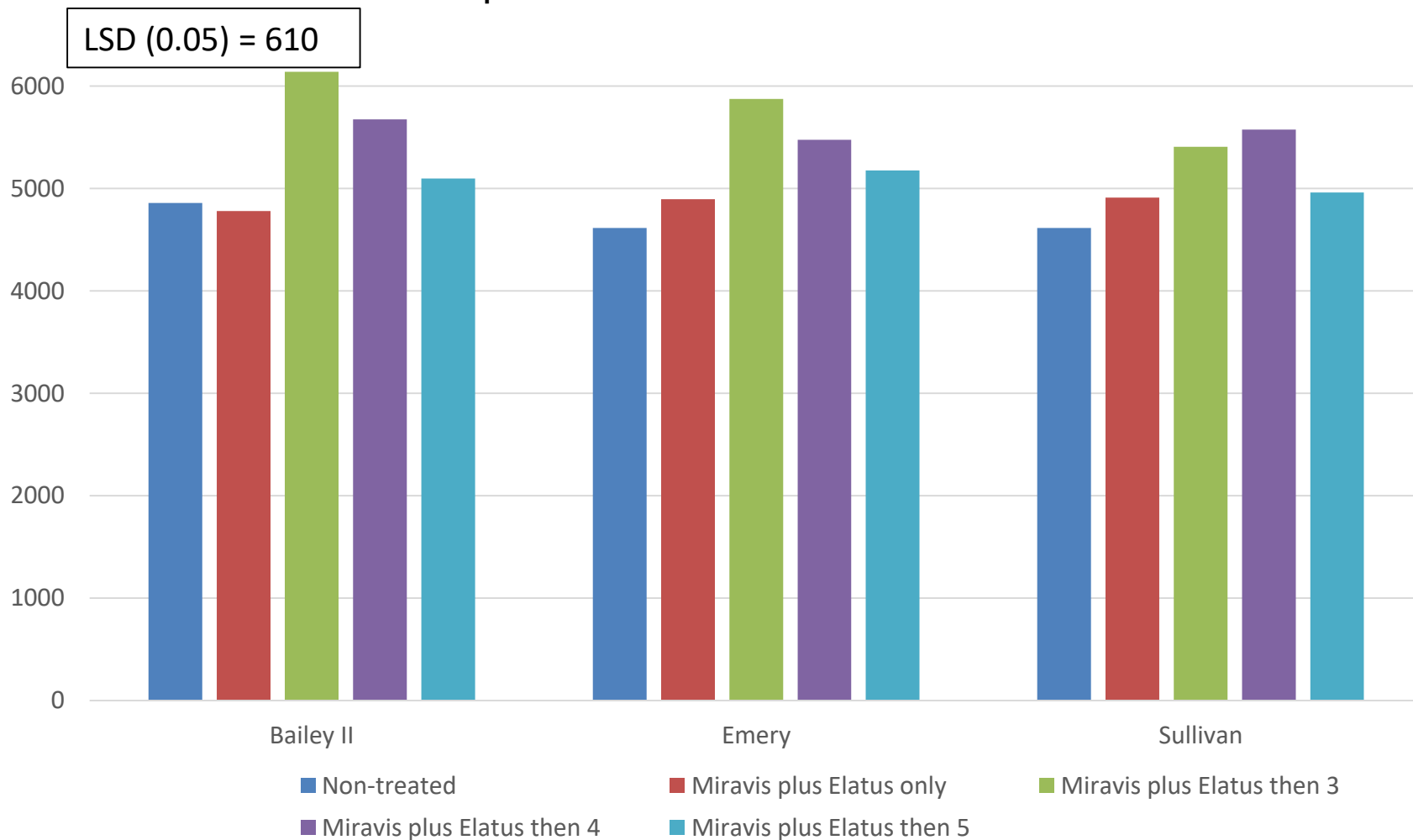
Canopy Defoliation (Percent of Leaves Fallen) at Harvest

Data are pooled over three locations in 2021



Peanut Yield (lbs/acre)

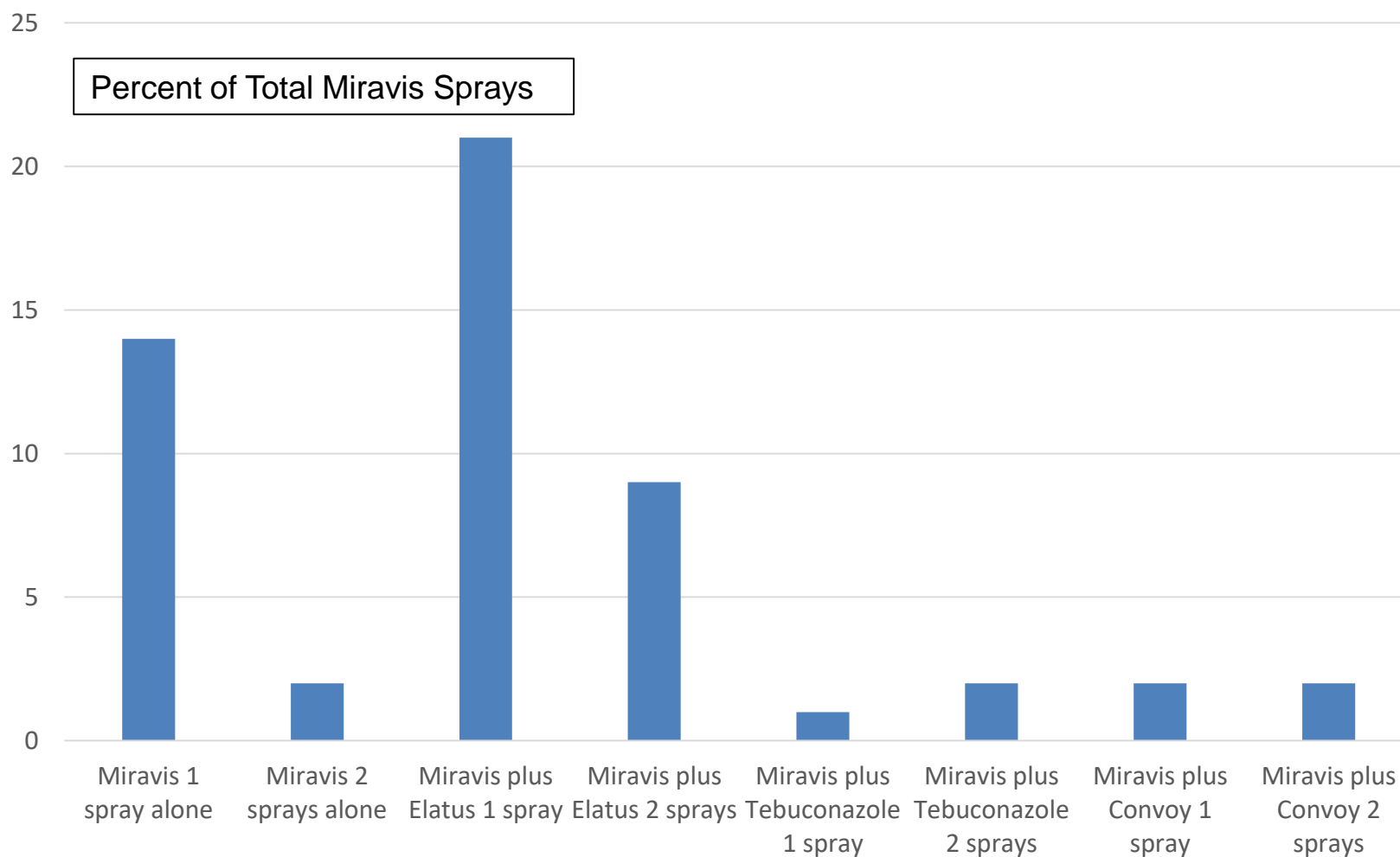
Data are pooled over three locations in 2021



Summary

- Follow up at 3 and 4 weeks after Spray 2 (Miravis plus Elatus/Convoy) more effective than no follow up or follow up 5 weeks (generally)
- Assume Elatus or Convoy was adequate on stem rot during critical time in NC (gaps based on timing of follow up with tebuconazole or azoxystrobin likely not a contributing factor to yield)
- Recommendations on follow up timing (generally and for these varieties)?
- Concern over lesions at end of the season
- Financial competitiveness if follow up interval needs to be 3 weeks
- *Miravis/Elatus contributions to Sclerotinia blight control*

Percent of the Number of Miravis Sprays alone or Co-Applied with Elatus, Convoy or Tebuconazole – NC and VA 46 Grower Surveys



Final Fungicide Applied following Miravis alone or Miravis Co-Applied with Elatus, Convoy or Tebuconazole – NC and VA

*A range of 1 to 4 sprays following Miravis was noted. Surveys from 46 growers.

