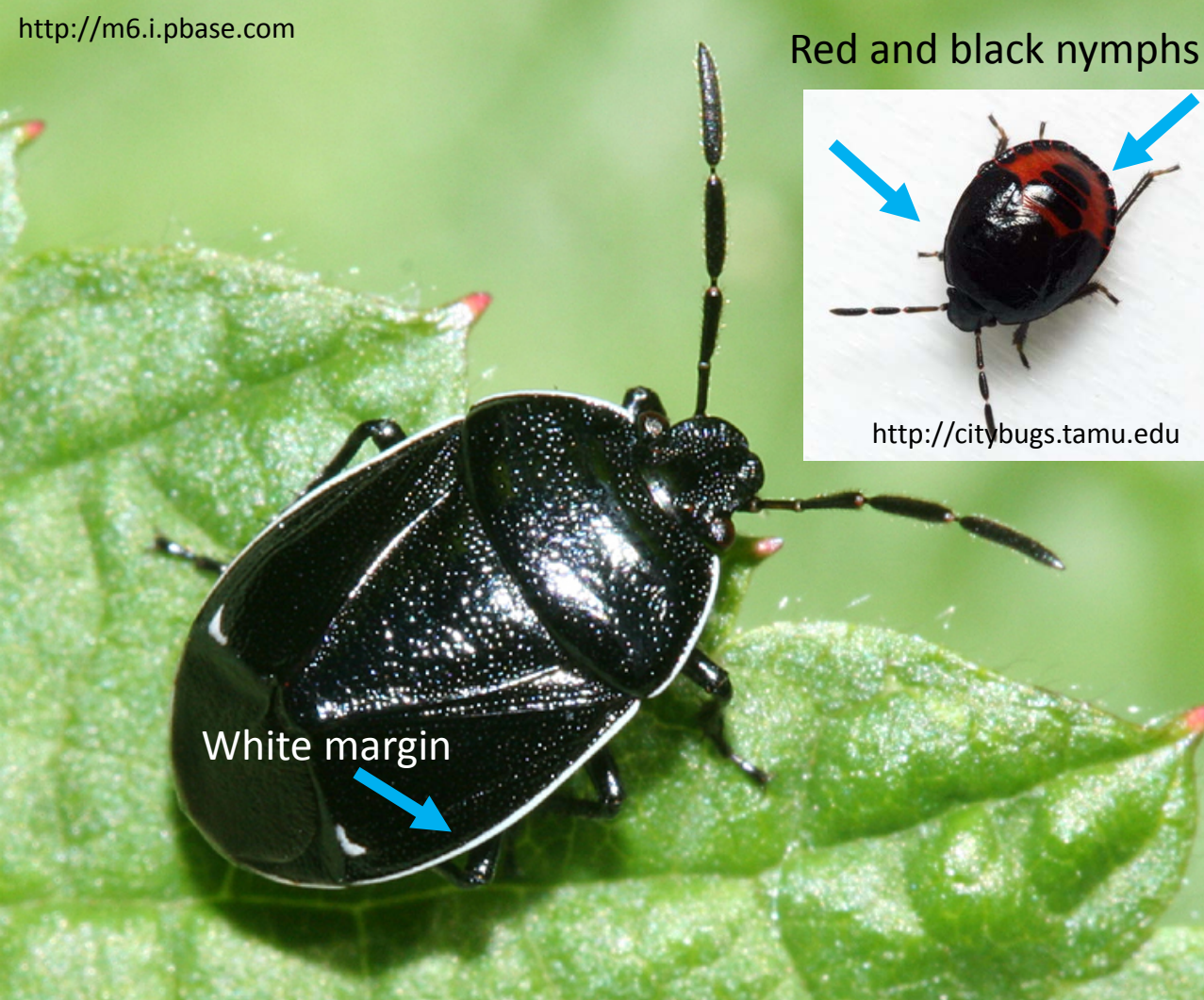




Peanut volunteers and stubble seen harboring
white-margined burrower bug
nymphs and adults

Courtesy, J. Croft

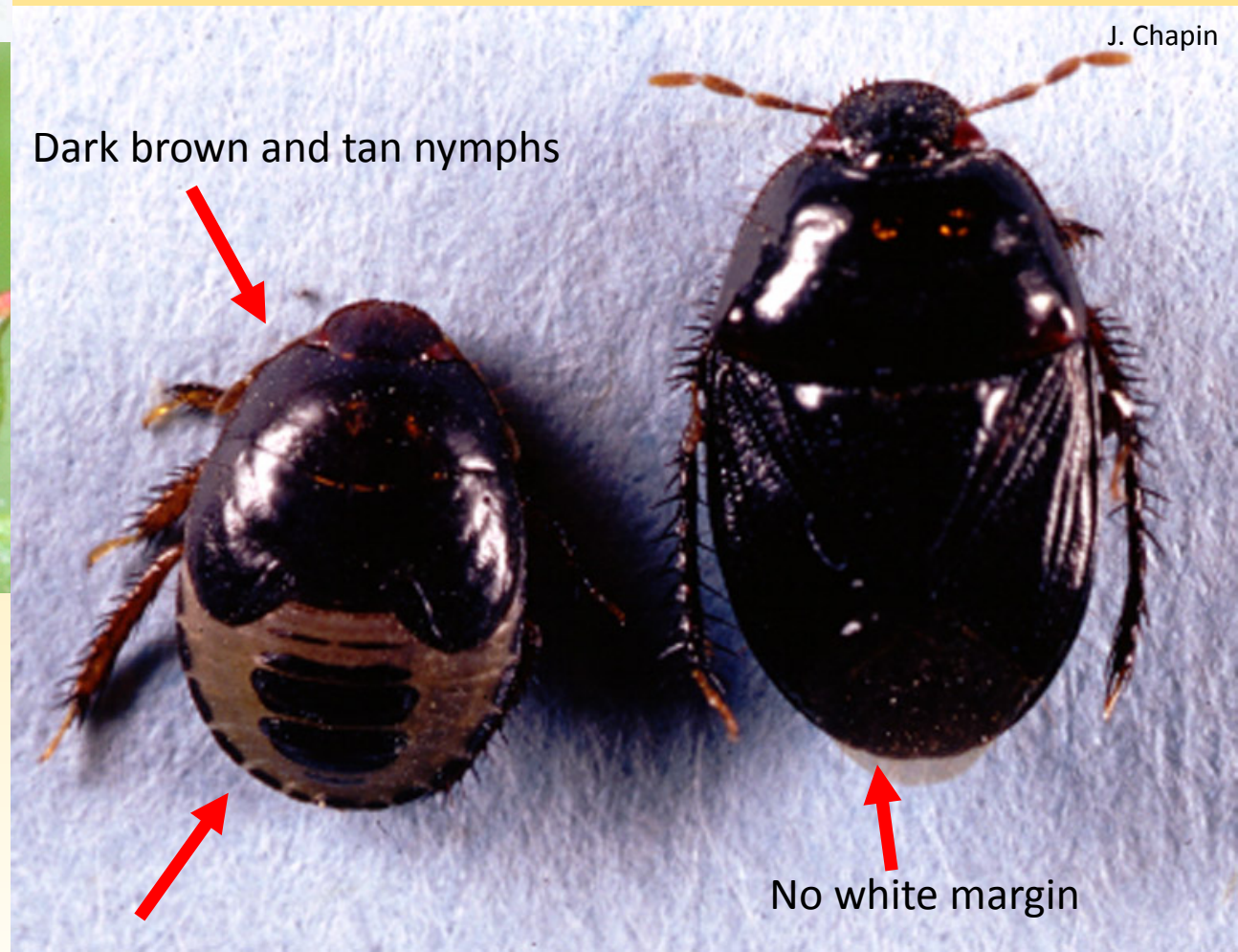


White-Margined Burrower Bug (*Sehirus cinctus*)

Does not damage peanuts

Found on Soybean and Cotton (Henbit in early spring)

Burrower Bug (*Pangaeus bilineatus*)
Nymphs and adults damage peanuts



Burrower Bug damage (pitting)



Hulls hide damage

Check kernels for damage

Feeding reduces kernel weight, grade

Damage --> Seg. II, III