

Freeze Damage Based on Peanut Digging Date

David Jordan and Ethan Foote
North Carolina State University

Michael Brake and Brian Stevens
Creig Deal and Ivy Lanier
NCDS&CS

Current Recommendation

Do not dig within 72 hours prior to frost or freeze

Freeze damage of 2% or more results in Seg II peanuts and substantial financial loss

Pods and kernels need to adequately dry to prevent freeze damage, especially immature pods and kernels

Dig within 3 days after a freeze to minimize pod shed

Original source of recommendations?

2023 Research

Predicted freeze on Thursday morning (November 2) allowed digging on Monday, Tuesday, Wednesday, and Thursday to determine how well the 72-hour recommendation holds up

The freeze was relatively hard and we are not sure how the information would translate to a typical frost

[North Carolina Herbicide Selection Tool](#)[Peanut Digging Evaluation Tool and Pod Sampling Videos](#)[Peanut Risk Tool and Field Log](#)[Crop Enterprise Budgets](#)[Equipment Information](#)[Peanut Digger-Shaker-Inverter \(DSI\)](#)[Field Days](#)[2020 NC Peanut Virtual Field Day 2020](#)
[CHROME Field Day](#)[Peanut Notes](#)[Pest Management](#)[Field Crops](#)[Resources](#)

Frost and Freeze Expected November 2 Peanut Notes No. 247 2023

— Written By [David Jordan](#) (3 months ago)

[> en Español](#)

Growers in many parts of North Carolina and Virginia are advised to NOT dig peanuts after this coming Saturday to avoid freeze damage. Peanuts need 72 hours under good drying conditions to avoid freeze damage. Details on the frost advisory are provided in previous *Peanut Notes*. A printout is provided at the following link.

[Frost Advisory 10-26-23](#) 🖨️

LEWISTON NC	51.	50.	56.	58.	59.	50.	42.	35. FROST
LUMBERTON NC	55.	55.	57.	60.	60.	55.	46.	39.
ORANGEBURG SC	57.	57.	58.	58.	59.	56.	47.	40.

	NATIONAL WEATHER SERVICE MODEL GIVING PROBABILITY OF RAIN							
CAPRON VA	-	-	-	-	0	20	20	0
SKIPPERS VA	-	-	-	-	0	20	20	0
SUFFOLK VA	-	-	-	-	0	20	20	0
WAKEFIELD VA	-	-	-	0	0	20	20	0
WAVERLY VA	-	-	-	0	0	20	20	0
GREENVILLE NC	0	-	-	-	0	10	10	10
LEWISTON NC	-	-	-	-	0	10	20	0
LUMBERTON NC	-	0	-	-	0	10	10	10
ORANGEBURG SC	0	10	-	-	0	-	10	10

A FREEZE IS IN THE FORECAST FOR WEDNESDAY MORNING IN CAPRON, SKIPPERS AND WAVERLY.

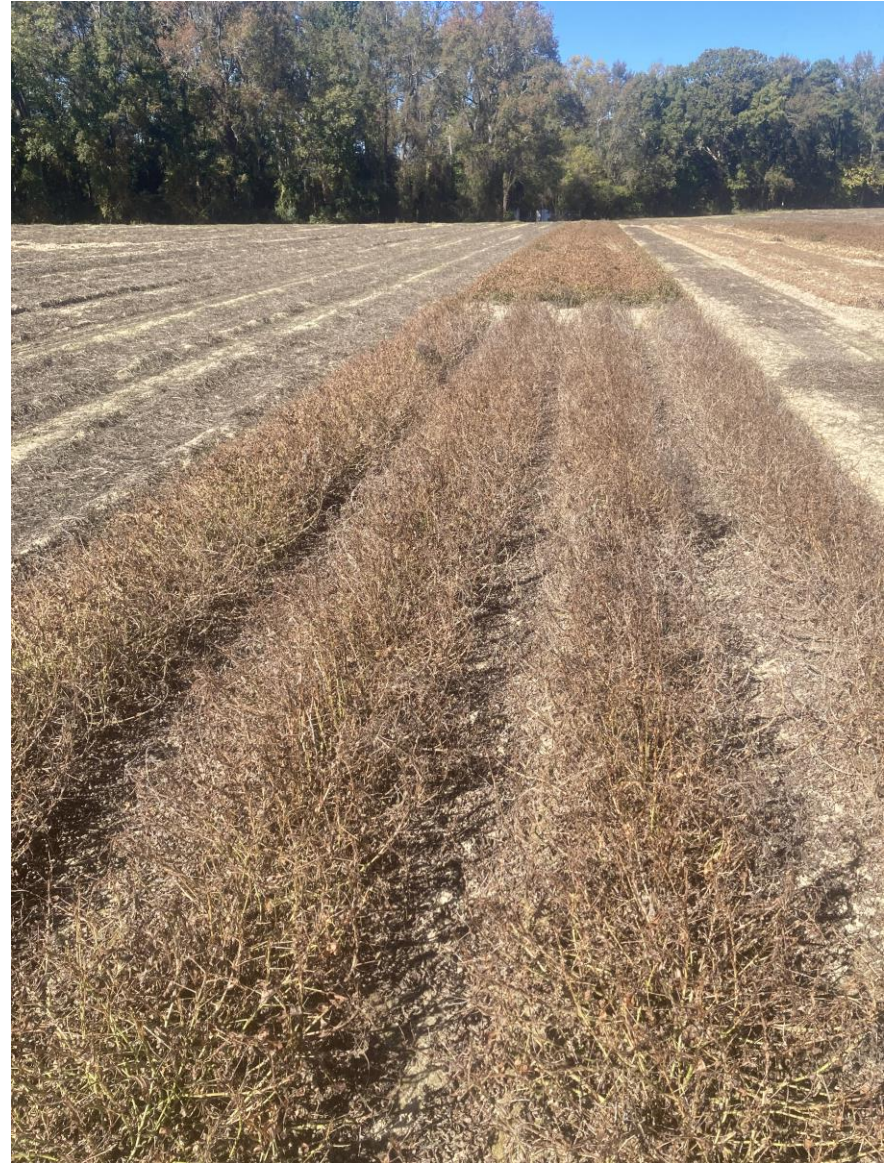
FROST IS EXPECTED WEDNESDAY MORNING IN SUFFOLK, WAKEFIELD, GREENVILLE, AND LEWISTON.

Percent moisture 14 hours prior to a hard freeze.^a

Dig (hours before freeze)	Lewiston	Rocky Mount
Monday (60)	30.3	36.6
Tuesday (48)	41.0	36.2
Wednesday (14) ^b	45.6	40.1

^aDrying conditions on Tuesday and Wednesday were not ideal (rain and clouds) while Monday was clear but cool

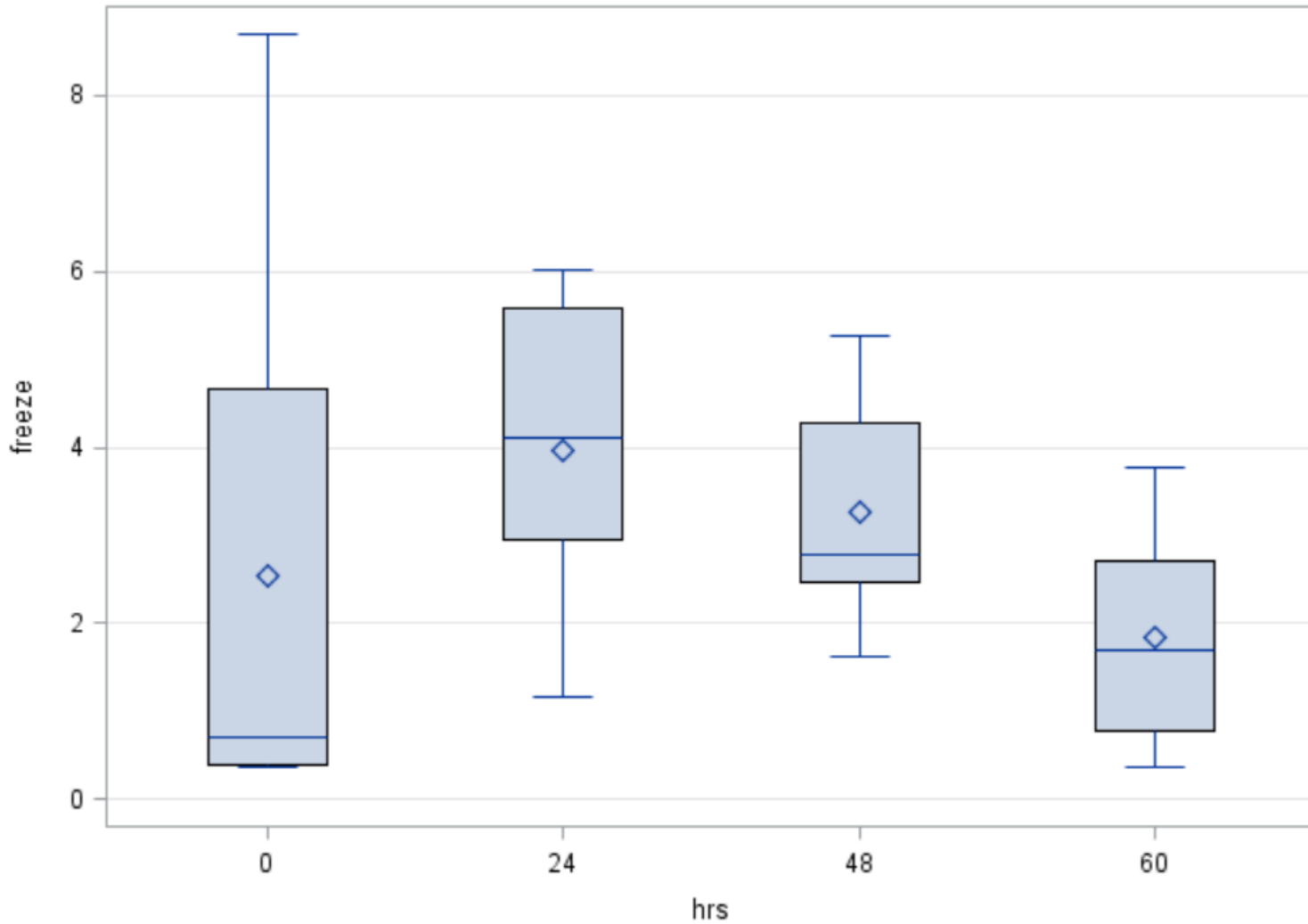
^bListed as 24 on graphs



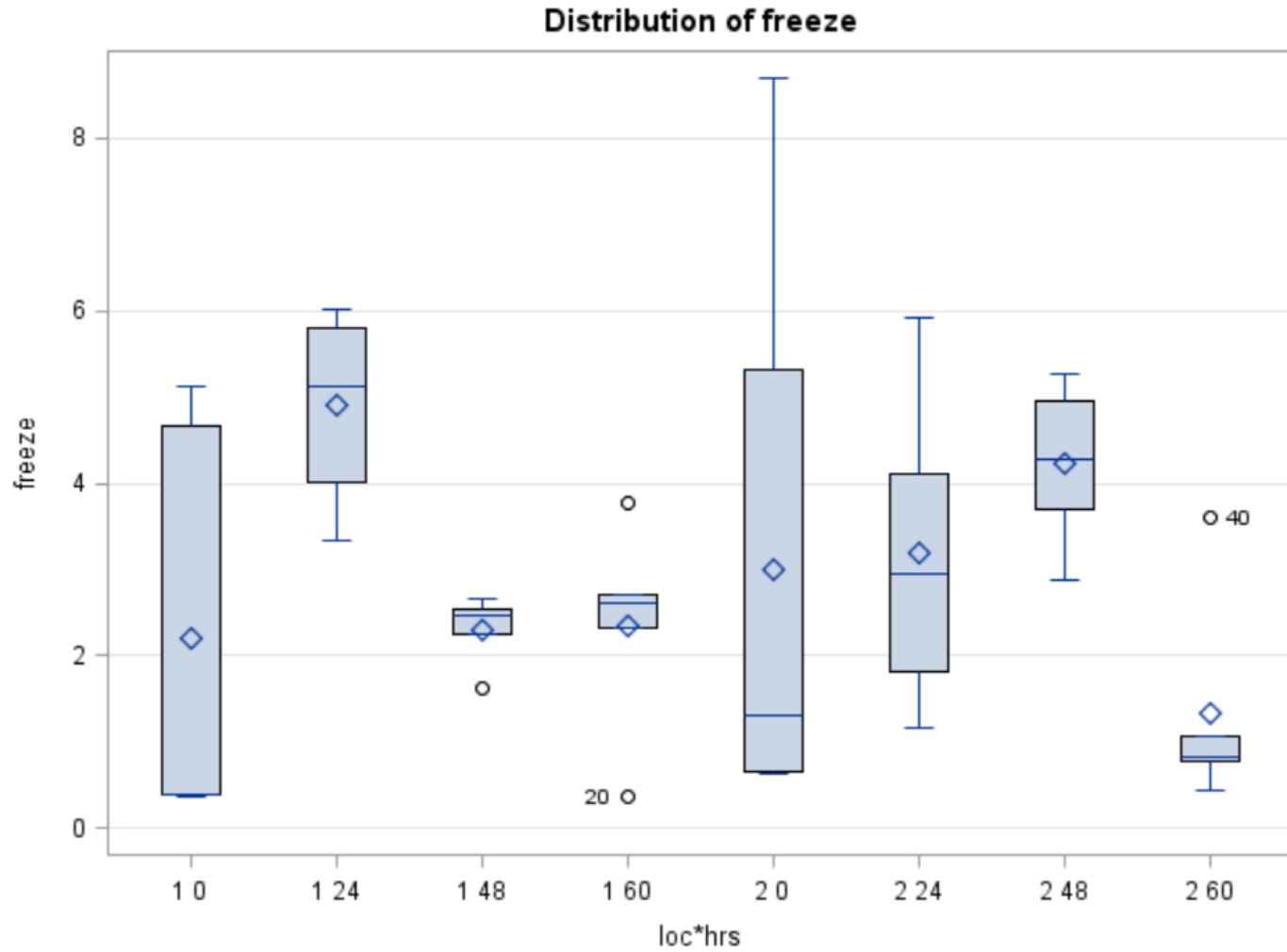
Freeze damage before and after digging

Freeze Damage Pooled Over Locations

Distribution of freeze



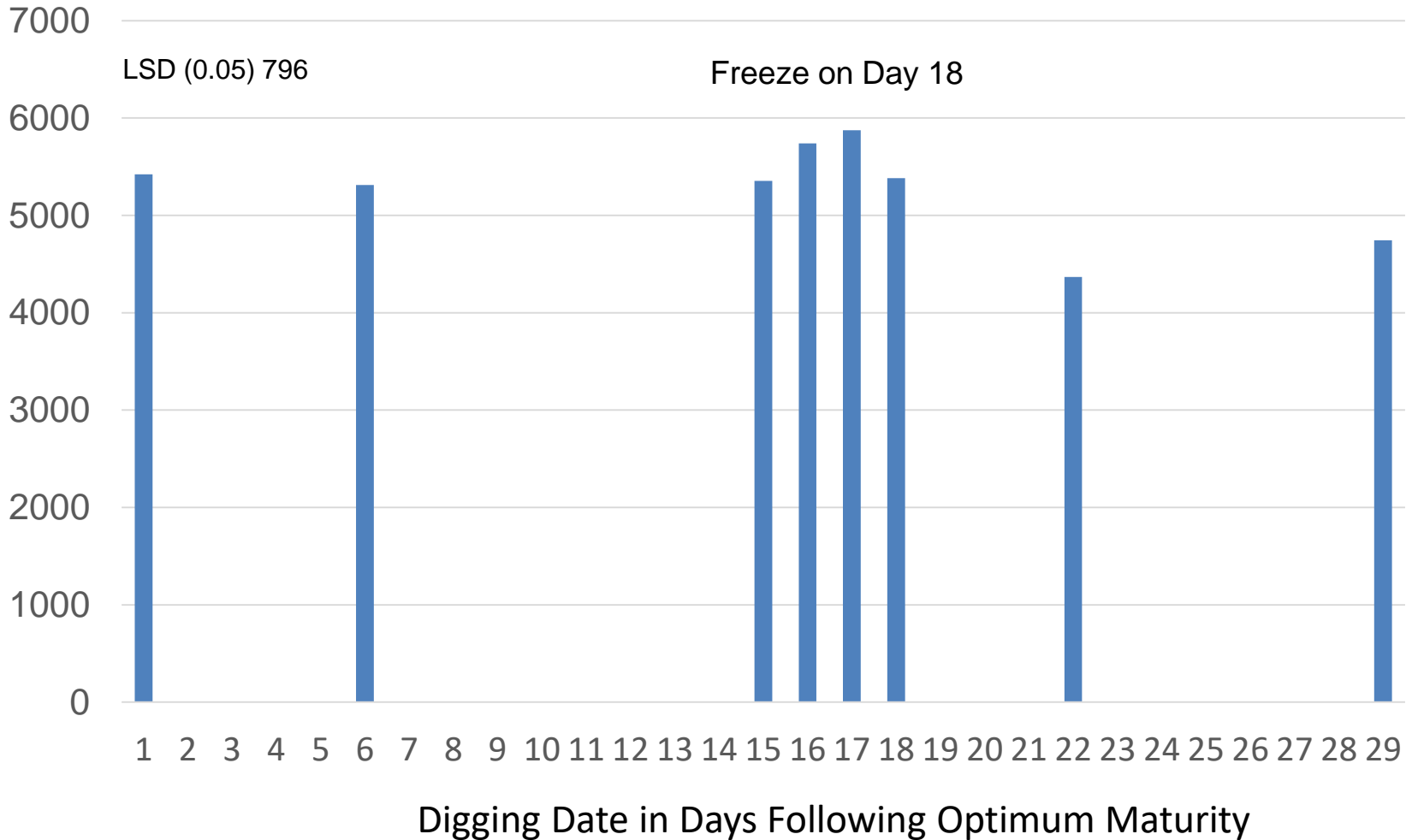
Freeze Damage for Each Location



Peanut Yield

Pounds per Acre

Minimal Defoliation of Peanut Canopy



2023 Summary

Greater variability in freeze damage when digging was closer to freeze event (more variation in moisture of pods)

Did not have a 72 hour interval (Sunday digging)

Hard freeze and not a typical frost

Yield was lower 5 and 12 days after the freeze event (there is not a no-freeze control)

The rate of yield loss from freeze damage above ground did not appear to be more rapid than yield loss caused by disease (inconclusive)

Recommend 96 hours